

Special Note (for v5.0.7):

1. *Inmarsat LaunchPad v5.0.7 has undergone some extensive changes for HDR integration owing to which it cannot be installed directly over v5.0.5 with older User Data.*
2. *We advise that, LaunchPad users should first **note down the custom Data Icons and their configurations along with User added APN in v5.0.5.***

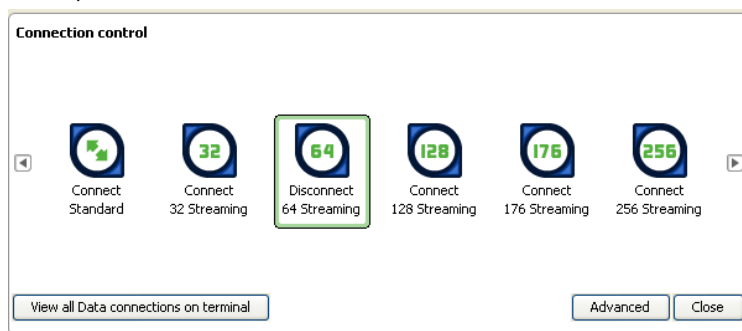
Steps:

- a. Click on the **Data** icon:

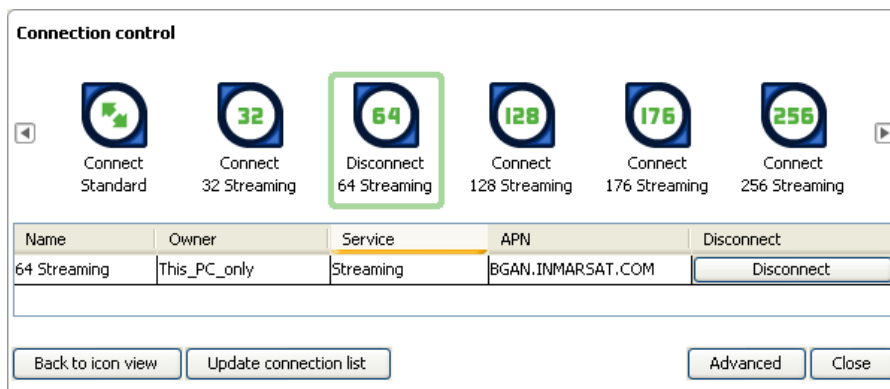


Data

- b. The Connection control panel is displayed with the data connections available with your terminal model and subscription:

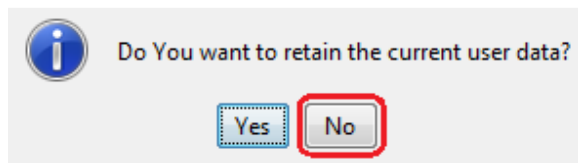


- c. Click on **View all Data connections on terminal**. Details of open connections display beneath the connection icons:



Note the APN and other configuration settings.

3. *Install v5.0.7 of the Inmarsat LaunchPad.*



Select No

4. **Create Custom Data Icons and APN** based on their *earlier* v5.0.5 data noted.

Select **LaunchPad services > Data Connection Options** (or click on **Advanced** in the Connection control window). The **Connections Tab** screen is displayed:

