

Cobham SATCOM

Lundtoftegaardsvej 93 D
2800 Kgs. Lyngby
Denmark

T: +45 39 55 88 00

F: +45 39 55 88 88

Date: September 2014

Document Number: 95-143281-A

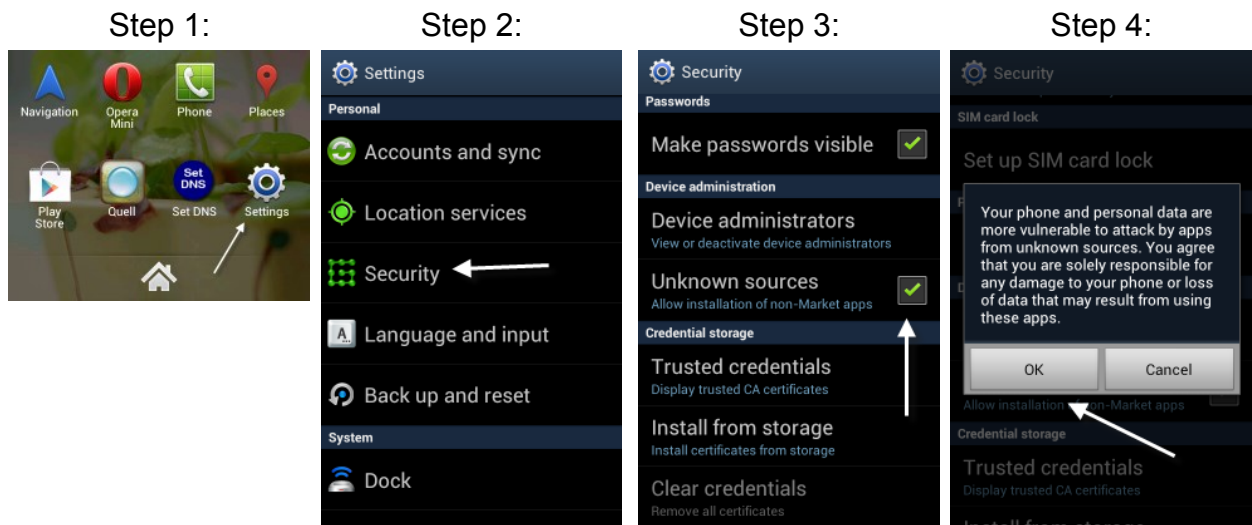
EXPLORER Connect App for Android

Subject:

This Tech Note explains how to install the EXPLORER Connect App on Android 4.0 and above. Currently the EXPLORER Connect App is not available for download on Google Play but can be installed locally. The Android system by default does not allow users to install applications from unknown sources and some settings needs to be changed in order for you to install the EXPLORER Connect App.

How to enable local install on Android 4.0 and above:

1. Open the app drawer and go to **Settings**.
2. In the **Settings** screen, scroll down to find the **Security** section and tap on it.
3. Scroll down to **Device administration** and check the **Unknown sources** option.
4. Tap **OK** when the warning window appears.



Download & extract the the file **EXPLORER_Connect_App.zip** located at Cobham SATCOM partner extranet:

<http://esupport.thrane.com/index.php? m=downloads& a=view&parentcategoryid=28&pcid=447&nav=0,24,447&group=default>

..or at the Cobham SATCOM Self Service Center:

<http://esupport.thrane.com/index.php?group=ssc>

Connect your Android device to your PC and copy the extracted .APK file to your device. On your Android device tap the .APK file and the EXPLORER Connect App will be installed.

Cobham SATCOM
Customer Service