



## **Iridium GO!™** **Launch Partner Training**

July 16, 2014



RELIABLE • CRITICAL • LIFELINES

# Legal Notices

Included in this presentation is non-public information that is only being communicated to Iridium partners.

This presentation and any related oral discussion or information ("Presentation") is strictly Proprietary and Confidential to Iridium. Consistent with your Partner Agreement with Iridium, you may not disclose the Presentation to others without express written permission from Iridium. Any violation of your Agreement's Proprietary and Confidentiality obligations shall result in remedies to the fullest extent available to Iridium at law or in equity. Please review your Partner Agreement and the Iridium Product Sales Terms and Conditions that govern your relationship with Iridium.

Statements made in this Presentation are not warranties, and IRIDIUM EXPRESSLY DISCLAIMS ALL WARRANTIES, IMPLIED WARRANTIES, WARRANTIES OF MERCHANTABILITY AND WARRANTIES OF FITNESS FOR A PARTICULAR PURPOSE, except as expressly set forth in the relevant Iridium Limited Warranty and the Iridium Product Sales Terms and Conditions.

The views and opinions expressed in this Presentation are solely those of the presenter and do not necessarily represent those of Iridium which makes no warranty as to accuracy or completeness of the information provided or the views or opinions presented. The information in this Presentation is subject to change without notice.

Read and understand the Iridium User Manual and the safety warnings and information contained in that Manual before using any Iridium product.

Iridium and the Iridium logo are registered trademarks of Iridium Satellite LLC. and it's affiliates. All other registered marks, trademarks, service marks and logos are property of their respective holders. Information is subject to change without notice.

# Today's topics:

- Current Status
- Accessories
  - Included (In-Box)
  - Sold Separately (Resale)
  - Accessory Installations & Use
- Iridium Mail & Web App
  - Main Screens
  - Set-Up
  - Use
- Q&A

# Current Status

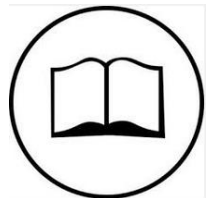
- Development
  - Firmware
  - Apps
  - Testing
- Regulatory Approvals
- Pricing Availability
- Inventory
- New Document Postings (on or before 7/21)
  - Accessory Images (available now)
  - Regulatory Reports
  - Iridium GO! app and portal guides
  - Iridium Mail & Web app guides



# Accessories: Included (In-Box)

## Packaging Includes:

- Iridium GO! Device
- Battery
- USB Cable
- AC charger (4 int'l adapters)
- DC charger
- Protective cover
- User Guide
- Legal Booklet
- GEOS Brochure



# Accessories: Included (In-Box)



## Rechargeable Li-Ion Battery

- 3600mAh
- 5.5 hours talk time
- 15 hours standby
- 4 hour recharge
- Part: WBAT1301

## Accessories: Included (In-Box)



### Iridium GO! Protective Cover

- Snaps on top
- Protects display
- Allows use of antenna
- Vented for cooling
- Reduces temperature in direct sunlight
- Part: WCVR1301

# Accessories: Included (In-Box)



## 1.2m USB Cable

- 1.2m with EMC-compliant ferrite
- USB to microUSB connectors
- Charges with included AC and DC adapters
- Supports firmware upgrades
- Part: WMUSB1301



## Accessories: Included (In-Box)



### AC charger with international adapters

- 1.5A for faster charging
- Adjustable USB cable input
- Universal adapter plug kit
- Supports more than 175 countries including most parts of Africa, Asia, Europe, the Middle East, New Zealand, North America, and Russia
- Part: WACTC1301

## Accessories: Included (In-Box)



### Auto Charger - USB Output

- 1.5A for faster charging
- USB cable input
- Designed for 12V auto outlets
- Part: WAUT1301

# Accessories: Sold Separately (Resale)



## Iridium GO! Carry Bag

- Durable, Rigid Nylon Exterior
- Soft, Felt Interior
- Zippered Opening
- Stores:
  - Iridium GO!
  - USB Cable
  - 1 Power Adapter
- Includes Clip-On Karabiner
- Part: WCCS1301

# Accessories: Sold Separately (Resale)



## Antenna Adapter Cable

- Connects Iridium antenna (sold separately) to Iridium GO! antenna port
- TS9 to TNC-F connector
- 15cm length
- Part: WAAC1301

## Accessories: Sold Separately (Resale)



### Wall Mount Bracket Kit

- Allows installation in vehicle or building with easy removal
- Includes:
  - Mounting plate
  - Wall bracket
  - Screws (2 wood, 2 metal)
- Part: WBKT1301

# Accessories: Sold Separately (Resale)

## Wall Mount Bracket Kit Installation



Attach the Mounting Plate by aligning the screw and locating pin to the back of the Iridium GO! device.



Once aligned, tighten the mounting screw to ensure a secure fit.



Select the appropriate screws (wood or metal) for the material of the wall.



Attach the bracket to the wall.



Route the USB cable and Antenna Adapter Cable through the guides in the rear of the Wall Bracket as shown above. Extend approximately 10 cm (4 in) of each cable on both sides of the bracket to allow connection to the Iridium GO! device.



Slide Iridium GO! onto the Wall Bracket.



Open the access doors and connect the USB and antenna cables.

**NOTE:** The Wall Bracket is also compatible with RAM Mounts® for placement on windows and in other locations.

# Accessories: Sold Separately (Resale)



## Outdoor USB Cable (5m)

- Provides power to Iridium GO! for temporary outdoor or permanent indoor installations when used with:
  - AC charger
  - Auto Charger
  - USB power source
- USB to microUSB connectors
- 5 meter cable length
- Weather-resistance microUSB connector cover when used in conjunction with Iridium GO! protective cover
- Part: W5USB1301

# Accessory Installations & Use

## In-Building



## In-Vehicle



## On-the-Move



## Camps / Bases





# Accessories: Sold Separately (Resale)

The Iridium GO! Spare Parts kit provides the components necessary to make field repairs to four areas of the device: battery door, battery gasket, connector/button covers for USB, SOS button and external antenna, and corner screw covers.

## Spare Parts Kit

- Allows Service Partners and their Dealers to make cosmetic field repairs for faster customer service handling
- Includes:
  - 5 Battery Doors
  - 10 Battery Gaskets
  - 5 Connector/Button Covers
  - 20 Corner Screw Covers
- Tools Required:
  - Slotted Screwdriver
  - Pliers
- Part: Coming Soon

# Accessories: Sold Separately (Resale)

## Spare Parts Kit Instructions

### 1. Battery Door

The battery door of Iridium GO! is designed with integrated screws for a secure fit.

#### To replace the door:

- Remove the existing battery door.
- Properly attach the new battery door
- When fitted correctly, the door will secure flush with the back of the device.

**TIP:** Each side of the door is slightly different in shape, so the battery door can only be attached to the unit in one way.

#### WARNING

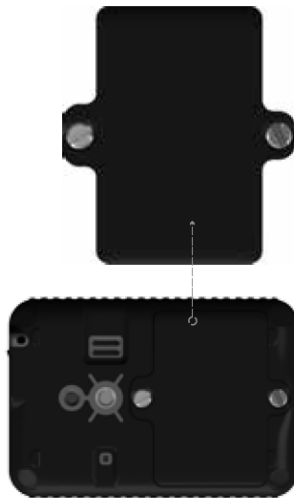
Do not use a damaged battery. If your battery is damaged or may be damaged, replace the battery prior to use. Failure to do so could result in serious injury or death.

### 3. Connector/Button Covers

Iridium GO! has three replaceable covers located along the right side (USB and SOS) and the left side (antenna) of the device. It is recommended that these covers are replaced if they become damaged.

#### To replace a connector/button cover:

- Remove the existing damaged cover.
- Select the corresponding cover (USB, SOS or Antenna) for the connector or button you are protecting.
- Using pliers, gently push the tag for the cover into the rectangular slot.



### 2. Battery Gasket

The battery gasket is located along the inner wall of the battery compartment, directly under the battery cover. This gasket is essential for maintaining the resistance to particle or water intrusion on the device and should be repaired if it becomes damaged during use.

#### To replace the gasket:

- Remove the existing gasket and clear all foreign particles from the gasket guide.
- Place the new gasket into the guide
- Using pliers to push down the gasket, ensure the gasket is firmly secured within the battery guide and is not twisted and seated in the bottom of the gasket guide.

**TIP:** The rubber gasket is designed with an angle at each corner. When inserting the new gasket, ensure that these corners are pointing down (inward to the device).



### 4. Corner Screw Covers

On the back of the Iridium GO! device, in each corner, you will find a triangular rubber cover which is inserted into the screw well, otherwise referred to as "feet".

#### To replace the screw covers:

- Remove the damaged cover and ensure the screw well is clear of any foreign material.
- Place the new cover over the screw well, ensuring that the cover is properly aligned, and press until the cover is flush with surrounding surface;

**TIP:** The screw covers (feet) are interchangeable.



# Accessory Availability

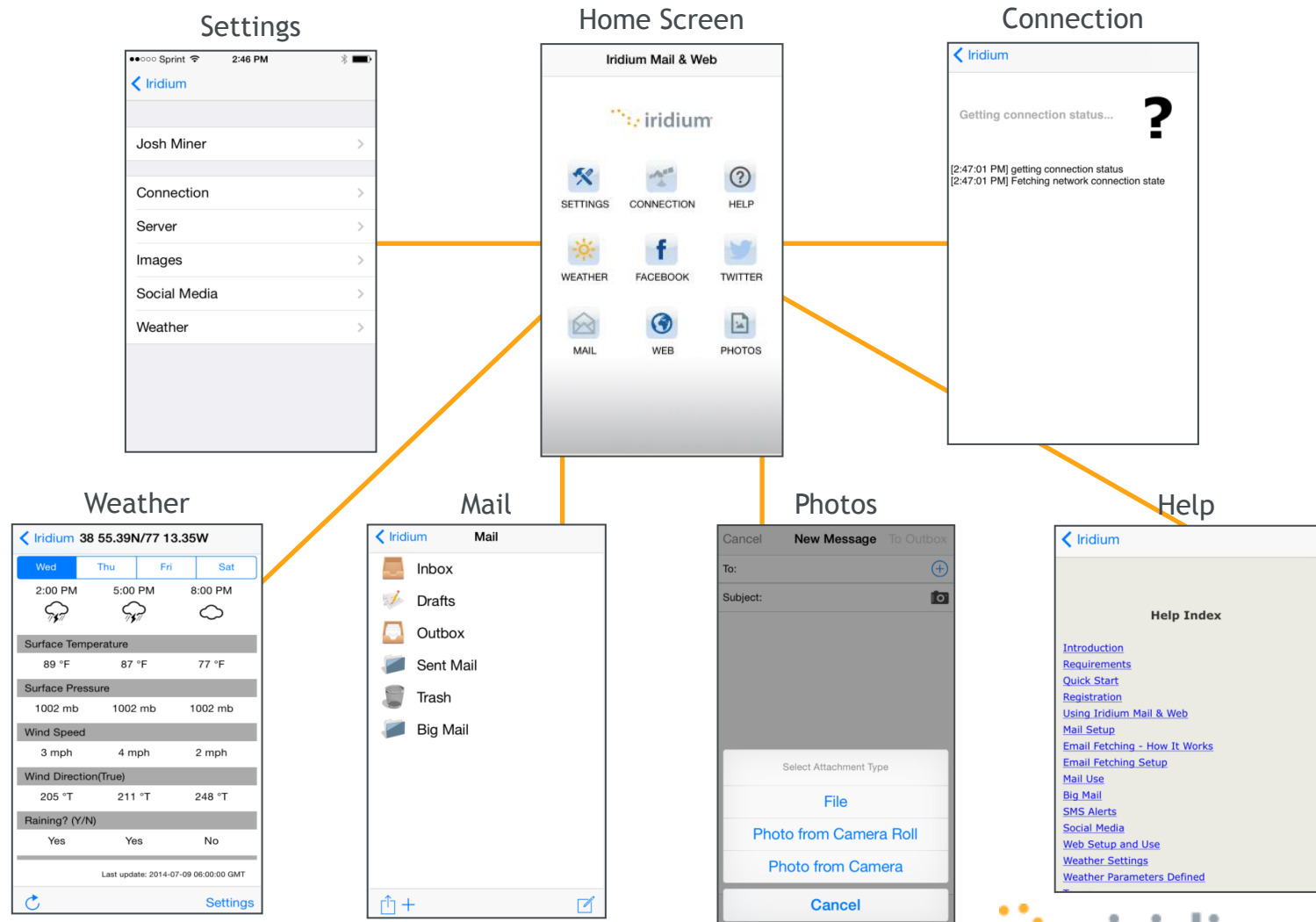
- All accessories to be available at launch with the exception of:

- Outdoor USB cable
- Wall Mount Bracket Kit
- Spare Parts Kit



Targeted for  
availability 30 days  
after launch

# Iridium Mail & Web app: Main Screens



# Iridium Mail & Web: Set-up

## 1) Download Iridium Mail & Web app

While connected to a WiFi network (recommended) or a terrestrial cellular network with data connection, search for 'Iridium Mail & Web' in iTunes app store. Download and install the app on your iPhone or iPad running iOS 6.1 or higher.

## 2) Register for an Iridium account

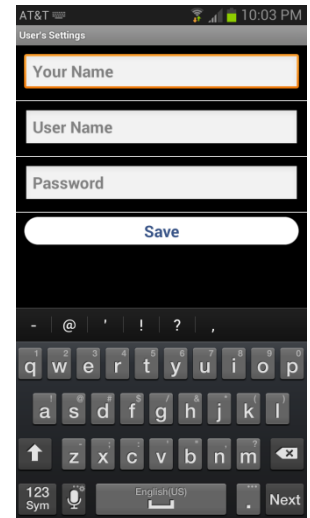
Navigate to [www.iridium.com/mailandweb](http://www.iridium.com/mailandweb) URL to fill out the registration form, follow the instructions and register for a username and password. Select 'Iridium GO!' from the device selection drop-down menu in the registration form. Registration for an account is free and required to use the application.

## 3) Pair the iOS device with Iridium GO!

- i. Setup the Iridium GO! unit in an outdoor area with open access to the sky and adequate signal strength prior to use
- ii. Flip up the antenna on Iridium GO! to turn it on
- iii. Wait for Iridium GO! to initialize and establish connection with the Iridium network
- iv. On your iOS device, go to Wi-Fi setting and select 'Iridium-xxxx' network. Wait for your iPhone or iPad to connect to the Iridium GO! Wi-Fi network.

## 4) Login to the application

Open the Iridium Mail & Web app. You will be asked to enter the registered username and password. Enter the credentials as supplied during registration and click on 'Login' to gain access to the application. Accept the terms and conditions outlined in the End User License Agreement popup. This dialog is displayed only on the initial user login.



# Iridium Mail & Web: Set-up

## 5) Configure device connection type

After logging in to the application for the first time, it'll guide you to configure the device connection type. Click OK to be redirected to the device selection screen. Select 'Iridium GO!' as your connection type and click the back button. Alternatively, you can run the device auto-detection capability by selecting 'Detect Device' button.

**Note:** Ensure that the 'Diagnostics' is turned off. This is an advanced option and is used Iridium support personnel to troubleshoot device connection & detection issues with the user.

## 6) Configure Web surfing

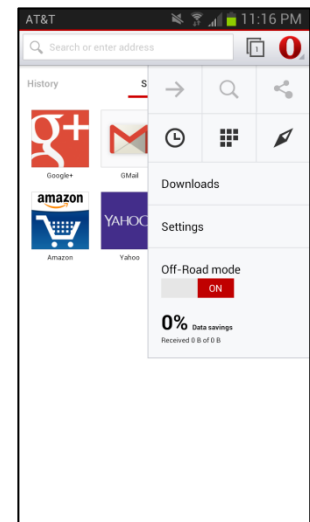
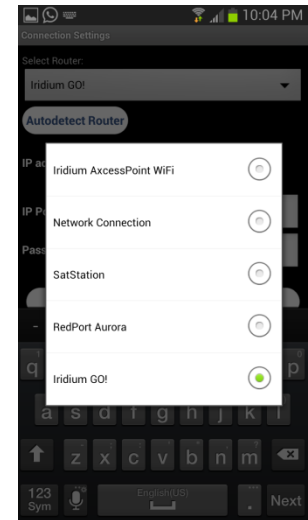
Iridium Mail & Web allows you to visit the web pages. To use web using Iridium Mail & Web, follow these instructions:

- You must first download, install and open the Opera Mini browser app
- In the Opera Mini app, click the "O" logo located on the bottom and change the "Data Savings" setting to "Opera Mini" to maximize the use of compression.

To access web pages using Iridium Mail & Web:

- Click on the 'Web' icon on the home screen
- Click the upper-right "Connect" option to start your connection
- Go to your Opera Mini app, enter a mobile website and press "Go" (see | [www.iridium.com/mobile](http://www.iridium.com/mobile) for list)
- Continue to access Web content. When finished, close your Opera Mini app and return to the Iridium Mail & Web app.
- Click the "Connection" icon on the main Web screen and stop the data connection

**Note:** Airtime charges will continue while the connection is active. Do not visit standard Web pages as videos and graphic-heavy pages designed for broadband networks will not download properly using Iridium Mail & Web.




# Iridium Mail & Web: Set-up

## 7) Configure Social Media settings (Facebook)

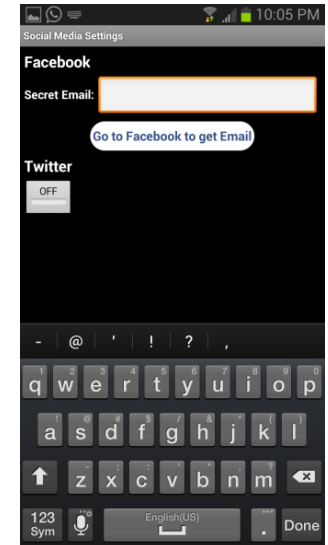
Facebook is a great way to update many people with the push of a single button. Most people post to Facebook from the Facebook page, which is too large for handheld satellite phones to conveniently update. Configuring Wireless Email Gateway for Facebook allows simple posts to Facebook by converting your message into an email format that Facebook will accept and post. You can even upload photos. They will be resized, compressed, and posted at a size that works over handheld satellite phone data feeds. Broadband users can also upload video.

A. **Activate Facebook Posting:** Requires a Post-by-Email Address, assigned to you by Facebook. You also must link your cellular phone number to your Facebook account. To find your Post-by-Email Address:

- i. Open a web browser, and go to: [www.facebook.com](http://www.facebook.com)
- ii. Sign into your Facebook account.
- iii. Click on the  in the top right corner of the screen.
- iv. Click "Account Settings"
- v. Click "mobile" in the left column
- vi. Click "Add a mobile phone number"
- vii. Type in your Facebook password
- viii. Select your country and your cellular phone number.
- ix. Follow on screen instructions. Facebook will text you a code to your phone to put in the box in the Facebook window.
- x. After your phone is linked to your Facebook account, you will find your "Post-by-Email Address" on the mobile section of the account settings.
- xi. Copy or write down the address.
- xii. Enter the Post-by-Email Address by selecting the Settings icon on the home screen and navigating to Social Media > Facebook > Secret Email. Then click <OK>. Notice that the Facebook icon on the user interface is now active.

### B. Posting to Facebook

- i. Click the Facebook icon on the home screen to open the "Post to Facebook Wall" window.
- ii. Enter the status update (maximum of 255 characters) in the text box.
- iii. To upload a photo, click the <Browse> button and select the image to upload.
- iv. Click <OK>. This creates a message ready to be sent on your next connection.
- v. The posting will be sent the next time you make an email connection.





# Iridium Mail & Web: Set-up

## 8) Configure Social Media settings (Twitter)

- i. Connect to the internet at home before going on your trip. Twitter registration will fail if you are not connected the internet.
- ii. Click on the Settings icon on home screen, select 'Social Media' and turn on Twitter
- iii. A window will appear asking you to login to Twitter to allow Iridium Mail & Web to post on your behalf
- iv. Allow Iridium Mail & Web access to your Twitter account
- v. A PIN will be generated once authentication has been granted. Record the PIN.
- vi. Enter the PIN in the appropriate location and hit OK.

Once this configuration is complete, tweets can be posted via Iridium Mail & Web using the Twitter icon on the home screen.

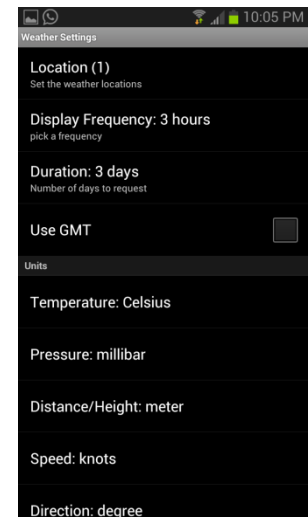
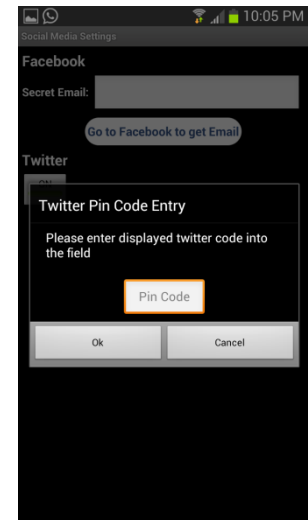
## 9) Configure weather forecast service

The application provides various user-customizable settings for the weather forecast service. To configure these settings

- i. Click on Settings icon on the home screen
- ii. Click on 'Weather'
- iii. Set locales: allows you to request weather information for different locations.

You can either save current location, enter latitude\longitude coordinates manually or select from a list of approx. 9000 airports worldwide

- a. Click on 'Locations'
- b. To add a location, click on '+' button.
  - To save current location, click OK when prompted for "Iridium Mail & Web would like to use your current location"
  - Enter location lat\long coordinates manually
  - Select airport: Search bar is provided to search for an airport either using the 3-letter airport code or by city name
- c. Enter a user-friendly name
- iv. Configure the display frequency, duration (days), units and types of various weather parameters to request forecast





# Iridium Mail & Web app: Use

- **Weather: Fetch Weather or Refresh**
  - Downloads weather forecast and automatically disconnects.
- **Mail/Facebook/Twitter/Photos: Send/Receive**
  - Sends emails, Facebook, Twitter, and photos queued in Outbox.
  - Downloads new messages from server and automatically disconnects.

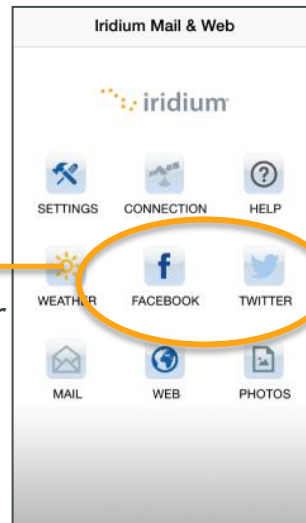
Weather

Iridium 38 55.39N/77 13.35W			
Wed	Thu	Fri	Sat
2:00 PM	5:00 PM	8:00 PM	
Surface Temperature			
89 °F	87 °F	77 °F	
Surface Pressure			
1002 mb	1002 mb	1002 mb	
Wind Speed			
3 mph	4 mph	2 mph	
Wind Direction(True)			
205 °T	211 °T	248 °T	
Raining? (Y/N)			
Yes	Yes	No	
Last update: 2014-07-09 06:00:00 GMT			
			<a href="#">Settings</a>

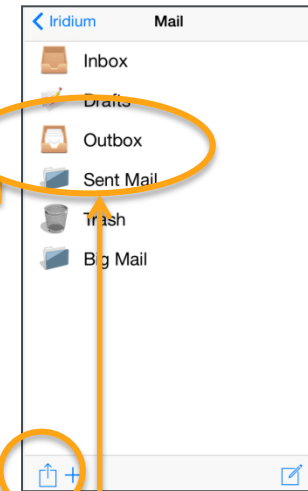
**Refresh**

**Fetch Weather**

Home Screen

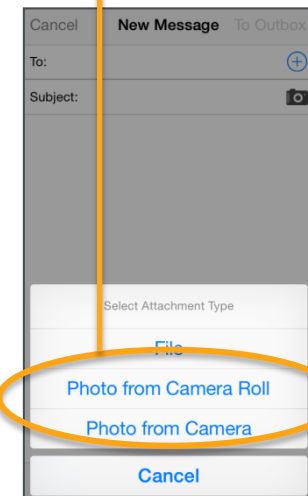


Mail



**Send/Receive**

Photos



# Summary:

- ✓ Current Status
- ✓ Accessories: In-Box, Resale, Installations & Use
- ✓ Iridium Mail & Web: Set-Up & Use
- Q&A



## Next Updates:

- Additional Documentation (Resources)
- Final Shipment Announcement
- Inventory Deliveries & App Store Downloads